



GLOBE 4800/4900 CAN
MANUALE UTENTE
USER INSTRUCTIONS
MANUEL D'UTILISATION
MANUAL DEL USUARIO



Dear customer,

Congratulations on your purchase of this product which has been designed and manufactured to the highest automotive standards utilising the latest technology for total reliability as per the European Community directives. This manual contains the product installation certificate.

The manual is divided in 9 parts:

Page 13	INTRODUCTION
14	ADDITIONAL PROTECTION
15	BRIEF INSTRUCTIONS
16	BASIC FUNCTIONS
17	ADVANCED FUNCTIONS
18	ALARM MEMORY
19	EMERGENCY OVERRIDE
20	PIN CODE PERSONALISATION
21	TROUBLE SHOOTING

Please read this manual to get the full benefit of the system.

We suggest you to keep this manual with the registration documents of the vehicle. It will be easier for you to find the information in the event of emergency.

Your dealer will be pleased to clarify any queries you may have with the system or its operation in the case you did not find any suggestion in chapter 9 (page 21).





1 - INTRODUCTION

The anti-intrusion alarm systems GLOBE 4800/4900 CAN are operated by the original high-security remote control of the vehicle and interfaced with the original vehicle data link through a CAN (Controller Area Network) serial interface. It gives a higher functional safety and reliability, reducing also complexity and installation time. The advanced system configuration features allow a quick system upgrade for any future need.

The total protection of your vehicle is assured by:

MOD.	ENGINE IMMOBILIZER	VOLUMETRIC PROTECTION	PERIMETRIC PROTECTION	CABLE CUTTING PROTECTION
AK4808 / 4908		●	●	●
AK4818 / 4918	●	●	●	●

1.1 - Personal PIN CODE

Each 4800/4900 has a PIN - CODE that can be used for the emergency override of the system. The PIN - CODE is factory - set. We suggest that you replace this number with another commonly used by you (for ex. cellular phone, credit card, etc...). as it would be easier to remember it.



2 - ADDITIONAL PROTECTION

You can increase the protection level of the system with the following additional sensors:

5452: Level monitor module

When the system is armed, this sensor will detect the vehicle being jacked up to tow it away or to steal the wheels.

5462: Hyperfrequency module

When the system is armed a microwave emission from the hyperfrequency module hidden in the passenger compartment will ensure the volumetric protection of the vehicle. For use on convertible vehicles, the volumetric protection will be stable even with the soft top, windows or sunroof left open.

2980: Window lift module

When the system is armed, the car electric windows will raise automatically. Can be fitted to any car with electric windows.



3 - BRIEF INSTRUCTIONS

3.1 - Arming

- Press the button of the radio control to lock the doors (if the vehicle has central locking).
- The turn indicators will blink .
- The buzzer will issue two beeps (if activated).
- The protections activate after a 40 s timer has elapsed.
- The LED will come on constantly for 40 s then it will flash.

3.2 - Protection

When armed the system will generate an acoustic and visual 30 s alarm when the bonnet, boot or one of the doors is opened. System with the volumetric sensor will generate the alarm in case of intrusion. The system remains armed at the end of the cycle.

3.3 - Interrupting an alarm cycle

When sounding, disarm the system (see point 3.4).

3.4 - Disarming

- Press the button on the radio control to open the doors.
- The turn indicators will blink.
- The buzzer will issue one beep (if activated).
- The protections are deactivated immediately .
- The LED will go OFF.

3.5 - Alarm memory

If an alarm has occurred the buzzer and the turn indicators will give four signals instead of one.
See the chapter 6 on page 18.

3.6 - Deactivating the volumetric ultrasonic sensor

The volumetric sensor can be deactivated if you want to leave the windows open or if someone remains in the passenger compartment.

- 1) Press the button on the control panel within 5 s after having switched off the ignition key.
Keep pressed the push-button until the long flash of the LED.
- 2) Arm the system pressing the button of the radio control. The sensor has been inhibited; all other functions remain activated. Sensors will automatically armed again when the ignition key will be switched on.

3.7 - Deactivating the volumetric ultrasonic sensor and boot

With the system armed, press the boot button on the radio control. The protections of volumetric sensor and boot are deactivated temporarily.

This function can be useful to open the boot without disarming the system.

Boot closing reactivate the sensors automatically.

Note: the manufacturer reserves itself the faculty to activate the function only on predisposed vehicles.



4 - BASIC FUNCTIONS

4.1 - Introduction

As the standard working features of this system can be modified by the installer he should have indicated the differences with the standard factory set-up (black squares) on this manual.

4.2 - Buzzer

Activated Deactivated

If activated the buzzer will sound in synchronism with the turn indicators to signal the arm and disarm of the system.

4.3 - U.S. frequency selection Low-Level

Activated Deactivated

The system allows setting the internal volumetric protection sensitivity with two distinct modes, Minimum (Low) or Maximum (Hi).

4.4 - Doors / bonnet / boot opened signal (See chapter 6 "ALARM MEMORY")

Activated Deactivated

When arming, the system signals via buzzer and turn indicators (5 blinks) if doors, bonnet or boot are open. If they are closed within 40 s their subsequent opening will be signalled again; after the 40 s set up delay there is no further trigger until they are closed and opened again.

4.5 - Arm/disarm blinker

Activated Deactivated

The arming of the system is indicated by 2 blinks of the turn indicators and disarm by 1 blink. If this function is deactivated, the turn indicators will only blink during an alarm trigger.

4.6 - Automatic arming

Activated Deactivated

The system will automatically arm 2 min. after the ignition is switched off and the last door closes, but the doors will not automatically lock. The system will not auto arm if the ignition is switched on within 2 min.

4.7 - Immobilizer automatic arming

Activated Deactivated

The engine immobilization will automatically activate 4 min. after the ignition is switched off. The LED will flash. The engine will be immobilized. Close and open the doors with the radio control to deactivate the system.



4.8 - Immobilizer alarm

Activated Deactivated

An alarm function can be added to the immobilizer automatic arming. 25 s after the ignition is switched ON the alarm will trigger.

5 - ADVANCED FUNCTIONS

5.1 - Immobilizer auto re-arm

Activated Deactivated

The immobilizer will automatically rearm if the ignition is not switched on within 4 min. after the system has been disarmed.

5.2 - Alarm auto re-arm

Activated Deactivated

When the system has been disarmed by using the radio control, after a delay the alarm will rearm if the ignition is not switched on. The timer will reset if the doors are opened and closed.



6 - ALARM MEMORY

When disarming, the system signals an alarm with buzzer and 4 blinks of the turn indicators. Pay attention to LED signalling, that will be available up until the next re-arming of the system or until the ignition is switched on.

The different signals indicate the cause of the alarm.

LED SIGNAL	ALARM DESCRIPTION
1 blink	doors, boot have been opened
2 blink	ultrasonic volumetric sensor triggered
3 blink	bonnet has been opened
4 blink	attempts to start (ignition key/hotwire)
6 blink	tamper mode





7 - EMERGENCY OVERRIDE

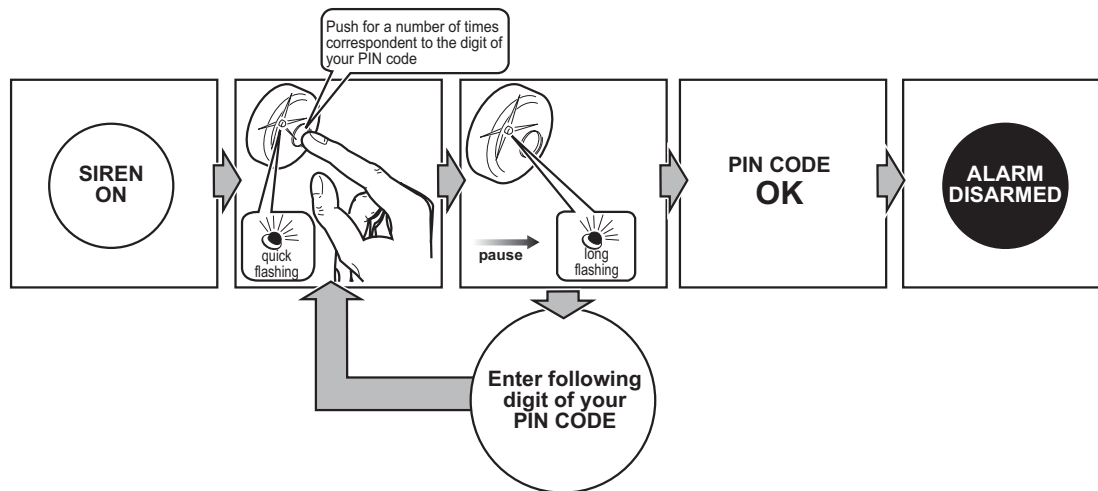
The emergency override can happen in two different ways:

- the first way is made turning ON the ignition key and in this way it happens immediately (transponder detecting);
- the second way happens through the control panel and to proceed with this way follow the instructions listed below.

Press the push button placed on the control panel a number of times corresponding to the first digit of your PIN CODE.

The LED will blink everytime you press the button, a longer blink will confirm that the right PIN CODE digit has been input. Proceed in the same way with the 3 further digits.

The system will disarm as soon as the last digit is input.





8 - PIN CODE PERSONALISATION

The PIN code should be personalized. As the PIN CODE enables access to the system, it should not be left in the unattended vehicle as it can be used to deactivate the system or to add new radio controls without authorization. In case of loss it is possible to replace the PIN CODE with the following procedure, and it must be replaced by a four digit code without the number '0'. Choose a code that you already use for other purposes to remember more easily (mobile phone, credit card, etc.). To program the system with your own four digit PIN CODE, disarm the system then proceed as follows:

- open a door.
- turn the ignition On.
- push the button on the control panel for a number of times corresponding to the first digit of the old PIN CODE. The LED will blink everytime you press the button, a longer blink will confirm that the right PIN CODE digit has been input.
- Proceed in the same way for all others digits. When the code is recognized the turn indicators will blink once.
- you have 20 s to start again the old PIN CODE input: press the button on the control panel for a number of times corresponding to the first digit of the old PIN CODE. The LED will blink everytime you press the button, a longer blink will confirm that the right PIN CODE digit has been input. If this PIN CODE is the same as the previous, the LED goes on a fixed way for 3 s. When it goes off you can digit the new PIN CODE.

- press the button on the control panel for a number of times corresponding to the first digit of the new PIN CODE. The LED will blink everytime you press the button, a longer blink will confirm that the right PIN CODE digit has been input.
- turn the ignition off.
- repeat the new code entry: press the button on the control panel for a number of times corresponding to the first digit of the new PIN CODE. The LED will blink everytime you press the button, a longer blink will confirm that the right PIN CODE digit has been input. If this PIN CODE is the same as the previous the system will store it: The storage confirmation is given by a 3 s blink of the turn indicators and of the LED.

To exit the program at any time, close the opened door and the old PIN will not be modified.

8.1 - Loss of the personal PIN CODE

In case of loss of the PIN CODE there is no possibility to enter in the system and to program it again.



9 - TROUBLE SHOOTING

An alarm has triggered for no apparent reason	
When you disarm the system the LED displays a series of flash codes which indicates the cause of the trigger (chapter 6)	
Solution A	If ultrasonic volumetric trigger is shown, check that windows sunroof and air vents are closed and that no moving objects are in the vehicle. If the problem persists contact your dealer.
Solution B	If direct contact trigger (doors, boot and bonnet opening) is shown, one of the switches may require adjustment. Contact your dealer.

The system does not arm/disarm	
The vehicle original remote control is not working (remote central door locking not operated)	Refer to the vehicle owner's manual
The vehicle original remote control is working (central door locking correctly operated).	Contact your dealer.